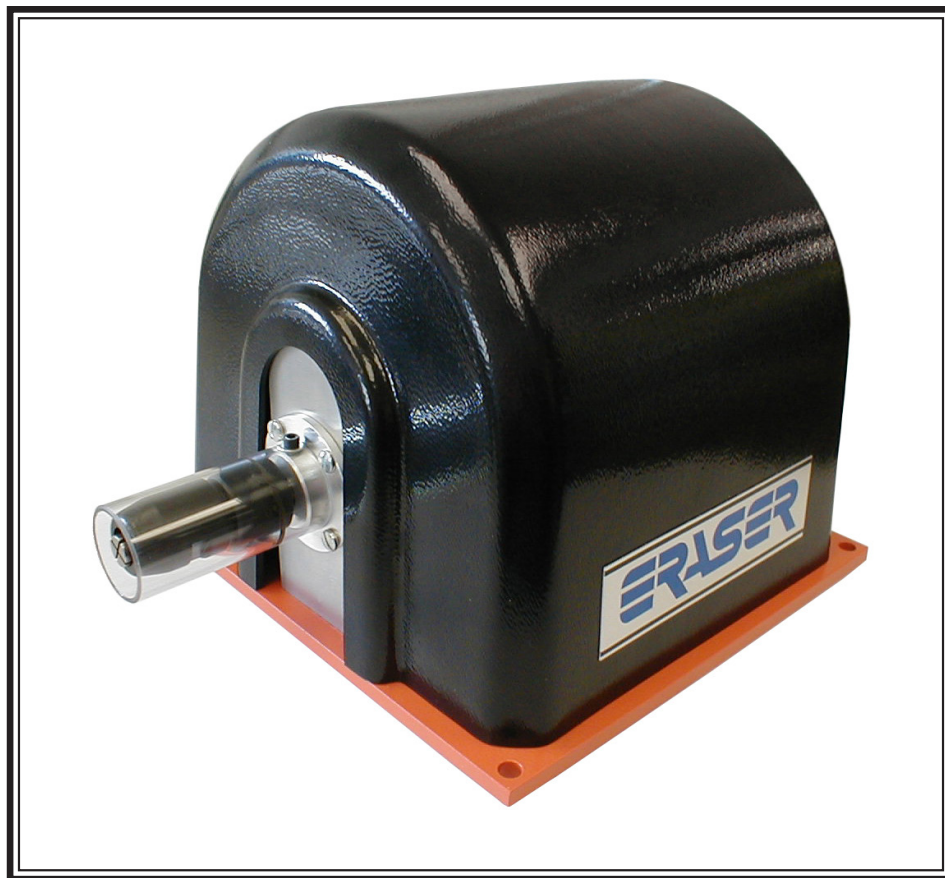




Operating Manual

Please Read Before Operating Unit



L1 Magnet Wire Stripper

Please Call for Service or Spare Parts

The Eraser Company, Inc.
PO Box 4961
Syracuse, NY 13221, USA

Phone: (315) 454-3237
Fax: (315) 454-3090
Website: www.eraser.com
E-mail: info@eraser.com



L1 MAGNET WIRE STRIPPER

ORDERING INFORMATION

Bench Rotary Insert Wire Stripper

AR2041 (L1) 120V, 60Hz
 Inserts See Insert Selection Guide

Replacement Parts

PR1349 Collet
 PR3878 Internal Collet
 TR0630 Collet Nut
 IR1823 Chuck Assembly
 IR0516 Clear Guard
 TR8329 Length Stop Rod
 PG2508 Wrench (2 Required)

Most inserts are available in two grades of material; Heavy Duty and Tungsten Carbide Tipped. Under normal use on a selling price basis, the most expensive grade will give the best cost versus insert life (i.e...carbide is better than heavy duty). Concave face permits easy wire entry, flat face permits stripping flush to the coil body and bullet nose permits stripping in confined areas.



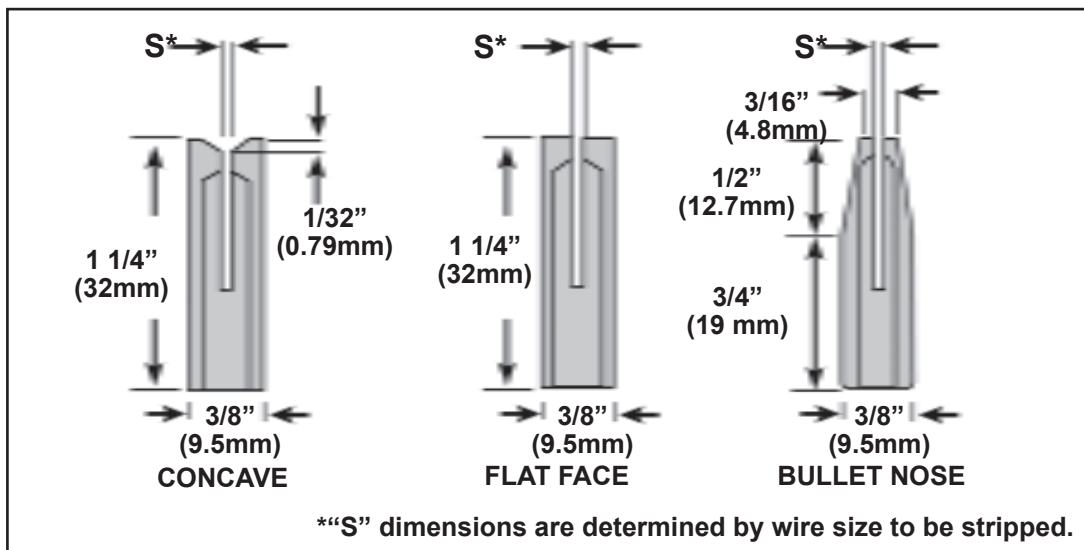
SPECIFICATIONS

Wire Stripping:

Wire Size 29-13 AWG (0.28-1.82mmø)
 Maximum Strip Length 3 1/2" (89mm); 1 5/16" (33.3mm) with strip length stop

 Decibel Rating 52 dB(A)
 Power 1/18 HP motor
 Weight 7 lbs. (3.2 Kg)
 Sizes Size 6 5/8" x 6 3/4" x 6 9/16" (168mm x 171mm x 166m)

SET-UP:



L1 Magnet Wire Stripper

WIRE SIZE	CARBIDE TIPPED INSERTS		
	Concave Face	Flat Face	Bullet Nose
29-24 AWG (0.28-0.51mm \emptyset)	L30CC-IR9007	L30CF-IR9008	L30CB-IR9009
24-20 AWG (0.51-0.81mm \emptyset)	L35CC-IR9017	L35CF-IR9018	L35CB-IR9019
20-16 AWG (0.81-1.30mm \emptyset)	L31CC-IR9027	L31CF-IR9028	L31CB-IR9029
15-13 AWG (1.45-1.83mm \emptyset)	L33CC-IR9037	L33CF-IR9038	L33CB-IR9039

WIRE SIZE	HEAVY DUTY GRADE INSERTS		
	Concave Face	Flat Face	Bullet Nose
29-24 AWG (0.28-0.51mm \emptyset)	L30HC-IR1951	L30HF-IR1961	L30HB-IR1981
24-20 AWG (0.51-0.81mm \emptyset)	L35HC-IR1952	L35HF-IR1962	L35HB-IR1982
20-16 AWG (0.81-1.30mm \emptyset)	L31HC-IR1953	L31HF-IR1963	L31HB-IR1983
15-13 AWG (1.45-1.83mm \emptyset)	L33HC-IR1954	L33HF-IR1964	L33HB-IR1984

INSERT INSTALLATION: Remove the clear plastic guard. The collet has two parts. The first holds the stripping insert and is mounted on the motor shaft by use of a set screw. The second part (nut) screws onto the first part and varies the pressure on the insert to allow adjustability for different wire sizes. It is not necessary to remove the collet assembly from the motor shaft to install the stripping insert. Unscrew the front part of the collet from the insert holder. Slide the insert into the holder, aligning the slots in the insert with the slots in the holder. The insert should protrude 1/8" - 3/16" (3.1 - 4.8mm) from the front of the collet.

***See Insert Selection Guide.**

STRIP LENGTH STOP: The Model L1 has a strip length stop rod that protrudes from the motor shaft and is held in place by a small set screw on the motor shaft. Using the larger of the 3 Allen wrenches provided, loosen the set screw holding the collet assembly to the motor shaft, and slide the assembly off the shaft. Adjust the strip length rod to the desired position using the smaller of the Allen wrenches provided. Replace the collet assembly with stripping insert and the plastic guard.

After replacing the collet assembly and guards on the unit, connect the unit to the power supply.

OPERATION:



Strip Length Stop

Insulation is removed as wire is inserted

NOTE: Safety glasses or other suitable eye protection should be worn when using these units.

Turn the unit on. Insert the wire into the stripping insert. The wire will strip while being pushed in, not while being withdrawn. If the wire does not strip, turn the unit off, remove the guard and use the collet adjusting wrenches to tighten the insert further. Replace the guard and try stripping the wire again. Repeat this procedure as often as necessary until a satisfactory strip is achieved.

If using the strip length stop insert the wire until it butts against the stop, then withdraw. Once set, the unit may be used continuously.

MAINTENANCE:

Keep the unit clean and free of insulation dust, and replace inserts when worn. No other maintenance is required.

TROUBLE SHOOTING:

PROBLEM: Wire does not strip.

SOLUTIONS:

- 1) Check that insert size is correct for wire being stripped.
- 2) Tighten collet on insert.
- 3) Check that insert is pushed back far enough into the collet.
- 4) Check if insert is worn, and replace.

PROBLEM: Wire breaks when inserted.

L1 Magnet Wire Stripper

SOLUTIONS:

- 1) Loosen collet on insert.
- 2) Check that insert size is correct for wire being stripped.
- 3) Check that there are no kinks or bends in the wire. Wire must be straight going into the insert.



Refer to the operating instructions before using this unit. High voltage is inside this unit and power must be disconnected before servicing.

IMPORTANT: NO LIABILITY WILL BE INCURRED BY THE ERASER CO. FOR INJURY, DEATH, OR PROPERTY DAMAGE CAUSED BY A PRODUCT WHICH HAS BEEN SET UP, OPERATED, AND/OR INSTALLED CONTRARY TO ERASER'S WRITTEN INSTRUCTION MANUAL, OR WHICH AS BEEN SUBJECTED TO MISUSE, NEGLIGENCE, OR ACCIDENT, OR WHICH HAS BEEN REPAIRED OR ALTERED BY ANYONE OTHER THAN ERASER, OR WHICH HAS BEEN USED IN A MANNER OR FOR A PURPOSE FOR WHICH THE PRODUCT WAS NOT DESIGNED.

ON/OFF LABEL

O I

This is the ON/OFF switch. Press I for on and press O for off. This switch is also the anti-start switch. In case of power outage, this switch must be reset for the unit to operate.

CAUTION LABEL

The Eraser Company, Inc.
PO Box 4961
Syracuse, NY 13221, USA



Phone: (315) 454-3237
Fax: (315) 454-3090
Website: www.eraser.com
E-mail: info@eraser.com

IR1811
REV 09/21