

ISO 9001:2000
CERTIFIED

The Eraser Company, Inc.
PO Box 4961/ Oliva Drive
Syracuse, NY 13221, USA



Phone: 315.454.3237
1.800.724.0594 (USA/Canada)
FAX: 315.454.3090
e-mail: info@eraser.com
Website: www.eraser.com

IR8775 Conversion Kit to Change HC10 to FC10

OPERATING INSTRUCTIONS

Service and Spare Parts Available

The IR8775 Conversion Kit is used to change the hand-operated HC10 Cable Cutter into a foot-pedal operated FC10 Cable Cutter. The kit is shipped partially assembled. Follow the instructions below to install, and refer to the drawing on reverse side as necessary.

Set-Up

First remove guard assembly (8) from the HC10 cutter by loosening the two shoulder screws (12) located on the side of the guard. Remove the large shoulder screw (11) holding the handle (7). Replace the handle with the connecting arm (35). Be sure the spring (17) is replaced back into the cutter with the connecting arm. Replace the guard assembly back onto the cutter using the two shoulder screws and nylon washers previously removed.

The turnbuckle (49) is adjustable to accommodate bench heights of 30" to 36". The cutter must be mounted so that the operating lever protrudes over the edge of the bench, or alternatively, a hole may be drilled in the bench to accommodate the linkage assembly so that the foot-pedal does not protrude beyond the front of the bench. In either case, the operating linkage must move freely.

Bolt the foot-pedal assembly securely to the floor directly underneath the cutter assembly. To access the four mounting holes of the foot-pedal assembly, remove the cover (41) by loosening the pan head screw (59) located on the top of the cover.

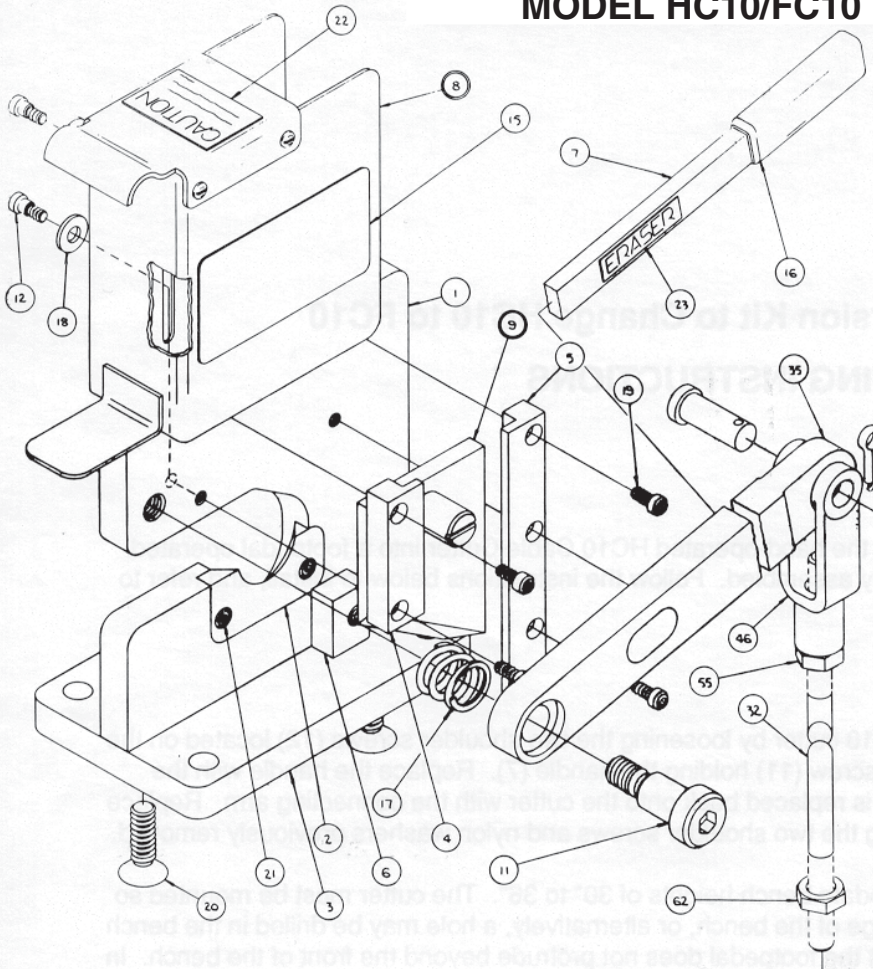
Adjust the linkage assembly by use of the turnbuckle until the foot-pedal (37) stops traveling just before hitting the floor. Once properly adjusted, tighten all linkage jam nuts securely, to lock the adjustment in place.

The Intertek logo is displayed in a large, white, rounded rectangular box. The word "Intertek" is written in a bold, sans-serif font.

IR8779
REV 02/08

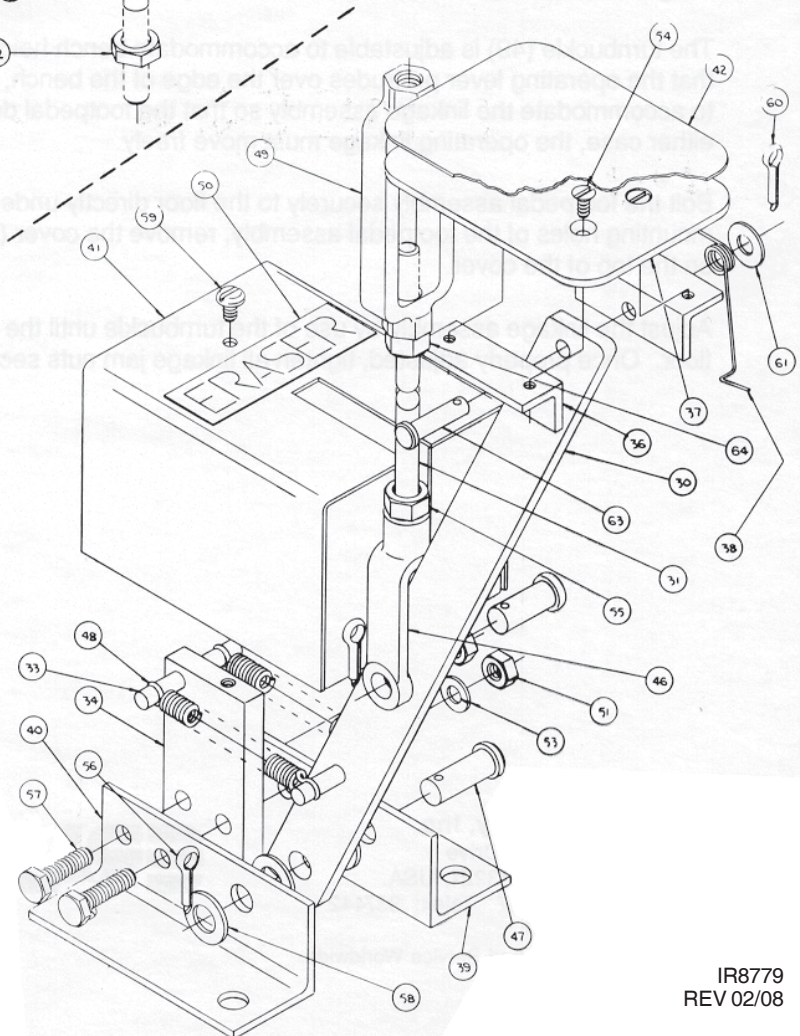
Proven Reliability Since 1911

MODEL HC10/FC10 PARTS LIST



- 1. IR8741 Plate
- 2. IR8743 Lower Blade
- 3. IR8746 Base Plate
- 4. IR8747 Short Rail
- 5. IR8748 Long Rail
- 6. IR8749 Blade Stop
- 7. IR8750 Handle
- 8. IR8766 Guard Assembly
- 9. IR8774 Upper Blade w/Pin
- 11. PG0556 Shoulder Screw
- 12. PG0557 Shoulder Screw
- 15. PR3207 Label
- 16. PR3671 Handle Grip
- 17. PR3675 Spring
- 18. TG3767 Washer
- 19. TG2058 Screw
- 20. TG3763 Screw
- 21. TG3766 Screw
- 22. IR87921 Label
- 23. PR3677 Name Plate
- 30. IR8756 Footpedal Lever
- 31. IR8757 LH Linkage
- 32. IR8758 RH Linkage
- 33. IR8759 Spring Anchor Pin
- 34. IR8760 Block

- 35. IR8761 Connecting Arm
- 36. IR8762 Mounting Bracket
- 37. IR8763 Footpedal
- 38. IR8764 Return Spring
- 39. IR8767 RH Bracket
- 40. IR8768 LH Bracket
- 41. IR8773 Cover
- 42. IR8776 Footpedal Pad
- 46. PR3672 End Yoke
- 47. PR3673 Clevis Pin
- 48. PR3674 Spring
- 49. PR3676 Turnbuckle
- 50. PR3677 Nameplate
- 51. TG0158 Nut
- 53. TG0298 Washer
- 54. TG0538 Screw
- 55. TG0828 Nut
- 56. TG1478 Cotter Pin
- 57. TG1658 Screw
- 58. TG2618 Washer
- 59. TG3258 Screw
- 60. TG3676 Cotter Pin
- 61. TG3679 Washer
- 62. TG3717 Nut
- 63. TG3764 Clevis Pin
- 64. TG3765 Nut



IR8779
REV 02/08