

Model 824

Cutter head (one required)

RI3040.....	for use on single level semi-rigid
RI3041.....	for use on two level semi-rigid
RI3043.....	for use on two level coax
RI3042.....	for use on single level coax
RI3044.....	for use on two level coax (braid exposed)
RI3045.....	for use on three level coax
RI2054.....	for use on four level coax
RI2047.....	for strip length of 0.070" (1.78mm) or less between blades
RI2056.....	for UV or V size hole
RI2060.....	for semi-rigid cable strip lengths of 0.070" (1.78mm) or less between blades

Optional Parts

RI5000.....	additional standard battery w/o charger
RI2040.....	additional standard battery w/110V trickle charger
RI0056.....	AC to DC power supply 115V 60Hz
RI0057.....	AC to DC power supply 220/230V 50Hz, European plug
RP5710.....	trickle charger, 110V 60Hz
RP2036.....	trickle charger, European plug
RI0091.....	rapid charger, 110V 60Hz
RI0092.....	rapid charger, 220V 50Hz
RI6711.....	replacement blade
RI3339.....	replacement blade

Model 1256

Cutter head (one required)

RI4040.....	for use on single level semi-rigid
RI4041.....	for use on two level semi-rigid
RI4042.....	for use on single level coax
RI4043.....	for use on two level coax
RI4044.....	for use on two level coax (braid exposed)
RI4045.....	for use on three level coax
RI2057.....	for strip length of 0.070" (1.78mm) or less between blades
RI2053.....	for UV or V size hole
RI2061.....	for semi-rigid cable strip lengths of 0.070" (1.78mm) or less between blades

Optional Parts

RI1040.....	quick release coupling
RI6711.....	replacement blade
RI3339.....	replacement blade

HTS1 & HTS2 Thermal Wire Strippers

Optional Parts

IR5023.....	replacement set un-notched elements
IR1399.....	small die element set (22, 24, 26, 28, 30AWG)
IR1405.....	large die element set (14, 16, 18, 20AWG)
AR6701.....	FE1 fume extractor, 115V 50/60Hz
AR6702.....	FE1 fume extractor, 230V 50/60Hz
AA0004.....	Brass Eraser brush to clean elements

LS10, LSR10, LSS10, LSA20 & LSAR20

Die blade selection (one required)

	<i>Diameter of die</i>
IR1702.....	parallel blades
IR1703.....	< 0.030" OD (< 0.76mmø)
IR1704.....	0.029-0.042" OD (0.74-1.07mmø)
IR1705.....	0.043-0.050" OD (1.09-1.27mmø)
IR1707.....	0.063-0.074" OD (1.60-1.88mmø)
IR1708.....	0.075-0.102" OD (1.91-2.59mmø)
IR1709.....	0.103-0.123" OD (2.62-3.12mmø)
IR1710.....	0.124-0.142" OD (3.15-3.61mmø)
IR1711.....	0.143-0.183" OD (3.63-4.65mmø)
IR1712.....	0.184-0.208" OD (4.67-5.28mmø)
IR1713.....	0.209-0.237" OD (5.31-6.02mmø)
IR1714.....	0.238-0.285" OD (6.05-7.24mmø)
IR1715.....	0.286-0.327" OD (7.26-8.31mmø)
IR1716.....	0.328-0.370" OD (8.33-9.40mmø)
IR1717.....	0.371-0.416" OD (9.42-10.57mmø)
IR1718.....	0.417-0.448" OD (10.59-11.38mmø)
IR1719.....	0.449-0.495" OD (11.40-12.57mmø)
IR1720.....	0.496-0.558" OD (12.60-14.17mmø)
IR1721.....	0.559-0.620" OD (14.20-15.75mmø)
IR1722.....	0.621-0.714" OD (15.77-18.14mmø)
IR1723.....	0.715-0.792" OD (18.16-20.12mmø)
IR1724.....	0.793-0.870" OD (20.14-22.10mmø)
IR1725.....	0.871-0.948" OD (22.12-24.08mmø)
IR1726.....	0.949-1.026" OD (24.10-26.06mmø)
IR1727.....	1.027-1.120" OD (26.09-28.45mmø)
IR1728.....	custom blade set

Optional Parts

IR8371.....	table and clamp assembly
IR1507.....	length stop



C100S

Wire guide selection (one required)

	<i>Outside diameter of wire</i>
IR8701.....	0.233-0.216" (5.92-5.49mm)
IR8702.....	0.215-0.208" (5.46-5.28mm)
IR8704.....	0.203-0.201" (5.16-5.11mm)
IR8705.....	0.200-0.196" (5.08-4.98mm)
IR8706.....	0.195-0.191" (4.95-4.85mm)
IR8707.....	0.190-0.186" (4.83-4.72mm)
IR8709.....	0.180-0.175" (4.57-4.45mm)
IR8710.....	0.174-0.168" (4.42-4.27mm)
IR8711.....	0.167-0.164" (4.24-4.17mm)
IR8712.....	0.163-0.156" (4.14-3.96mm)
IR8713.....	0.155-0.151" (3.94-3.84mm)
IR8714.....	0.150-0.144" (3.81-3.66mm)
IR8715.....	0.143-0.139" (3.63-3.53mm)
IR8716.....	0.138-0.135" (3.51-3.43mm)
IR8717.....	0.134-0.131" (3.40-3.33mm)
IR8718.....	0.130-0.120" (3.30-3.05mm)
IR8719.....	0.119-0.115" (3.02-2.92mm)
IR8720.....	0.114-0.111" (2.90-2.82mm)
IR8721.....	0.110-0.106" (2.79-2.69mm)
IR8722.....	0.105-0.101" (2.67-2.57mm)
IR8723.....	0.100-0.096" (2.54-2.44mm)
IR8724.....	0.095-0.091" (2.41-2.31mm)
IR8725.....	0.090-0.084" (2.29-2.13mm)
IR8726.....	0.083-0.077" (2.11-1.96mm)
IR8727.....	0.076-0.073" (1.93-1.85mm)
IR8728.....	0.072-0.068" (1.83-1.73mm)
IR8729.....	0.067-0.062" (1.70-1.57mm)
IR8730.....	0.061-0.057" (1.55-1.45mm)
IR8731.....	0.056-0.050" (1.42-1.27mm)
IR8732.....	0.049-0.041" (1.24-1.04mm)
IR8733.....	0.040-0.037" (1.02-0.94mm)
IR8734.....	0.036-0.034" (0.91-0.86mm)
IR8735.....	0.033-0.030" (0.84-0.76mm)
IR8736.....	0.029-0.026" (0.74-0.66mm)
IR8737.....	0.025-0.020" (0.64-0.51mm)

Optional parts

IR8190.....	complete set of 37 wire guides in plastic box
IR4655.....	standard 50° blade with pivot pin
IR4660.....	blade for thin or film insulation
IR7978.....	special short blade for very fine fragile wires
TR8192.....	short strip length stop

K8A & K8B

Blade selection (one required)

IR0318.....	strips wire 38-8 AWG (0.10-3.25mmø) for hard or thin insulation
IR0319.....	strips wire 11-15 AWG (2.31-1.45mmø)
IR0321.....	strips wire 16-20 AWG (1.30-0.81mmø)
IR0323.....	strips wire 25-28 AWG (0.46-0.33mmø)
IR0324.....	custom stripping blades, send material for sizing
IR0337.....	strips wire 38-8 AWG (0.10-3.25mmø) or up to 3/8" OD (9.5mmø) for thick or slippery insulation
NR3210.....	custom diamond tipped blades

Optional Parts

PR0003.....	air filter, regulator and lubricator
-------------	--------------------------------------

C200 & C300

Wire guide selection

	<i>Outside diameter of wire</i>
IR2301.....	0.022-0.020" OD (0.56-0.51mmø)
IR2302.....	0.029-0.023" OD (0.74-0.58mmø)
IR2303.....	0.036-0.030" OD (0.91-0.76mmø)
IR2304.....	0.046-0.037" OD (1.17-0.94mmø)
IR2305.....	0.056-0.047" OD (1.42-1.19mmø)
IR2306.....	0.064-0.057" OD (1.63-1.45mmø)
IR2307.....	0.072-0.065" OD (1.83-1.65mmø)
IR2308.....	0.083-0.073" OD (2.11-1.85mmø)
IR2309.....	0.095-0.984" OD (2.41-2.13mmø)
IR2310.....	0.105-0.096" OD (2.67-2.44mmø)
IR2311.....	0.119-0.106" OD (3.02-2.69mmø)
IR2312.....	0.130-0.120" OD (3.30-3.05mmø)
IR2313.....	0.143-0.131" OD (3.63-3.33mmø)
IR2314.....	0.155-0.144" OD (3.94-3.66mmø)
IR2315.....	0.167-0.156" OD (4.24-3.96mmø)
IR2316.....	0.185-0.168" OD (4.70-4.27mmø)
IR2317.....	0.199-0.186" OD (5.05-4.72mmø)
IR2318.....	0.215-0.200" OD (5.46-5.08mmø)
IR2319.....	0.228-0.216" OD (5.79-5.49mmø)
IR2320.....	0.240-0.229" OD (6.10-5.82mmø)
IR2321.....	0.251-0.241" OD (6.38-6.12mmø)
IR2322.....	0.260-0.252" OD (6.60-6.40mmø)

Optional Parts

IR0085.....	Set of all 22 wire guides
IR1071.....	titanium nitrate coated replacement blade
IR8631.....	set of two replacement carbide blades
IR8632.....	set of six replacement carbide blades
IR0703.....	complete faceplate assembly
TR0705.....	replacement alignment tool for C200 and C300

L2S, L2AS, L4, L4A, PL3S
Insert selection (one required)

Wire Size	Heavy Duty Grade Inserts			Machine Used On
	Concave Face	Flat Face	Bullet Nose	
29-24 AWG (0.28-0.51mmø)	L30HC-IR1951	L30HF-IR1961	L30HB-IR1981	L1, L2S, PL3S, L4
24-20 AWG (0.51-0.81mmø)	L35HC-IR1952	L35HF-IR1962	L35HB-IR1982	
20-16 AWG (0.81-1.30mmø)	L31HC-IR1953	L31HF-IR1963	L31HB-IR1983	
15-13 AWG (1.45-1.83mmø)	L33HC-IR1954	L33HF-IR1964	L33HB-IR1984	
13-11 AWG (1.83-2.31mmø)	L38HC-IR1955	L38HF-IR1965	L38HB-IR1985	L2S, L4
11-9 AWG (2.31-2.90mmø)	L34HC-IR1956	L34HF-IR1966	L34HB-IR1986	
9-8 AWG (2.90-3.25mmø)	L37HC-IR1957	L37HF-IR1967	N/A	L2AS, L4A, IR0106
8-6 AWG (3.25-4.11mmø)	L39HC-IR1958	L39HF-IR1968	N/A	
5-4 AWG (4.62-5.18mmø)	L40HC-IR1959	L40HF-IR1969	N/A	

Wire Size	Carbide Tipped Inserts			Diamond Tipped Insert	Machine Used On
	Concave Face	Flat Face	Bullet Nose	Flat Face	
29-24 AWG (0.28-0.51mmø)	L30CC-IR9007	L30CF-IR9008	L30CB-IR9009	L30DF-IR9010	L1, L2S, PL3S
24-20 AWG (0.51-0.81mmø)	L35CC-IR9017	L35CF-IR9018	L35CB-IR9019	L35DF-IR9020	
20-16 AWG (0.81-1.30mmø)	L31CC-IR9027	L31CF-IR9028	L31CB-IR9029	L31DF-IR9030	
15-13 AWG (1.45-1.83mmø)	L33CC-IR9037	L33CF-IR9038	L33CB-IR9039	L33DF-IR9040	
13-11 AWG (1.83-2.31mmø)	L38CC-IR9047	L38CF-IR9048	N/A	L38DF-IR9050	L2S, IR0104, L4
11-9 AWG (2.31-2.90mmø)	L34CC-IR9057	L34CF-IR9058	L34CB-IR9059	L34DF-IR9060	
9-8 AWG (2.90-3.25mmø)	N/A	N/A	N/A	N/A	L2AS, L4A, IR0106
8-6 AWG (3.25-4.11mmø)	N/A	N/A	N/A	N/A	
5-4 AWG (4.62-5.18mmø)	N/A	N/A	N/A	N/A	

L1
Insert selection (one required)

Wire Size	Carbide Tipped Inserts			Diamond Tipped Insert
	Concave Face	Flat Face	Bullet Nose	Flat Face
29-24 AWG (0.28-0.51mmø)	L30CC-IR9007	L30CF-IR9008	L30CB-IR9009	L30DF-IR9010
24-20 AWG (0.51-0.81mmø)	L35CC-IR9017	L35CF-IR9018	L35CB-IR9019	L35DF-IR9020
20-16 AWG (0.81-1.30mmø)	L31CC-IR9027	L31CF-IR9028	L31CB-IR9029	L31DF-IR9030
15-13 AWG (1.45-1.83mmø)	L33CC-IR9037	L33CF-IR9038	L33CB-IR9039	L33DF-IR9040

Wire Size	Heavy Duty Grade Inserts		
	Concave Face	Flat Face	Bullet Nose
29-24 AWG (0.28-0.51mmø)	L30HC-IR1951	L30HF-IR1961	L30HB-IR1981
24-20 AWG (0.51-0.81mmø)	L35HC-IR1952	L35HF-IR1962	L35HB-IR1982
20-16 AWG (0.81-1.30mmø)	L31HC-IR1953	L31HF-IR1963	L31HB-IR1983
15-13 AWG (1.45-1.83mmø)	L33HC-IR1954	L33HF-IR1964	L33HB-IR1984

CUTTER HEAD ASSIGNMENT FORM

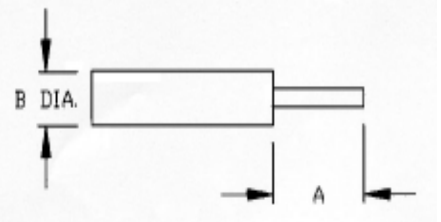
(ATTACHMENT)

For: Bench
 Hand

To Process your stripping head order accurately please provide the following:

- The actual strip dimensions, the outside diameter (O.D.) of your cable and any tolerance requirements (if applicable)
- Use the appropriate diagram based on the number of strip levels required
- Specify inch or metric
- Please fill out your company's name, sign and date the form and fax it to 315-454-3090

If you have any questions concerning this form, please contact The Eraser Company at **800-724-0594**



*A = _____
 *B = _____ Dia.

ONE LEVEL
COAX OR
SEMI-RIGID

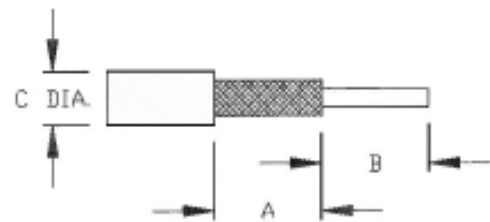
*Strip Dimensions



*A = _____
 *B = _____
 *C = _____ Dia.

TWO LEVEL
(DIELECTRIC EXPOSED)
COAX OR SEMI-RIGID

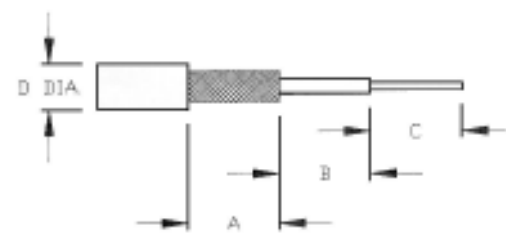
*Strip Dimensions



*A = _____
 *B = _____
 *C = _____ Dia.

TWO LEVEL
(BRAID EXPOSED)
COAX

*Strip Dimensions



*A = _____
 *B = _____
 *C = _____
 *D = _____ Dia.

THREE LEVEL
COAX OR JACKETED
SEMI-RIGID

*Strip Dimensions

Tolerance Required = +/- . _____ /Inch or Metric (Circle One)

Company Name: _____

Customer Signature: _____

Date: _____

The Eraser Company, Inc.
 PO Box 4961 / Oliva Drive
 Syracuse, NY 13221, USA
 Phone: (315) 454-3237 / Fax: (315) 454-3090
 Website: www.eraser.com
 E-mail: info@eraser.com